

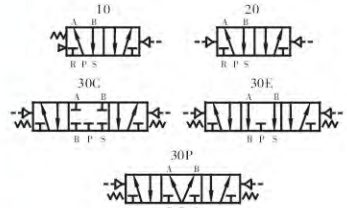
AIR VALVE(5/2 5/3WAY)



4A300 SERIES



Symbol

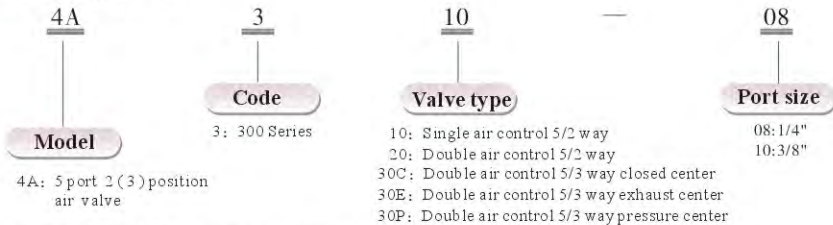


Specification

Item/Model	4A310-08	4A320-08	4A330C-08	4A330E-08	4A330P-08	4A310-10	4A320-10	4A330C-10	4A330E-10	4A330P-10
Fluid	Air (to be filtered by 40 μ filter element)									
Acting	Exterior control									
Valve type	5 port 2 position			5 port 3 position		5 port 2 position		5 port 3 position		
Orifice size	25mm ² (Cv=1.39)			18mm ² (Cv=1.00)		30mm ² (Cv=1.67)		18mm ² (Cv=1.00)		
Port size	In=Out=Exhaust=1/4"					In=Out=3/8"		Exhaust=1/4"		
Lubrication	Not required									
Pressure range	1.5~8.0 bar(0.15~0.8MPa)(21~114Psi)									
Proof pressure	12 bar(1.2MPa)(171Psi)									
Temperature	-5~60°C (-23~140°F)									
Max.frequency	4 cycle/sec			3 cycle/sec		4 cycle/sec		3 cycle/sec		
Weight	310g	400g	540g	540g	540g	310g	400g	540g	540g	540g

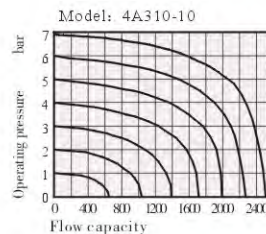
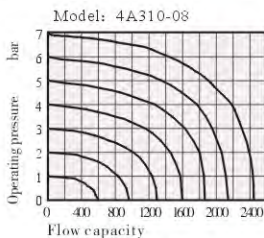
*Note: PT, NPT, BSPP Thread are available.

Ordering code



* Note: Please to refer page I-43 for manifold type and ordering.

Flow chart

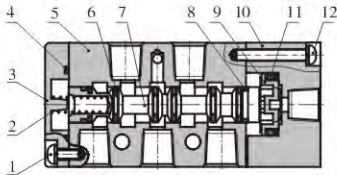


AIR VALVE(5/2 5/3WAY)

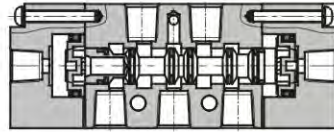
4A300 SERIES

Inner structure

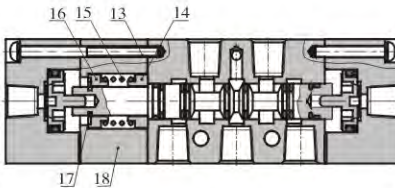
4A310



4A320



4A330C



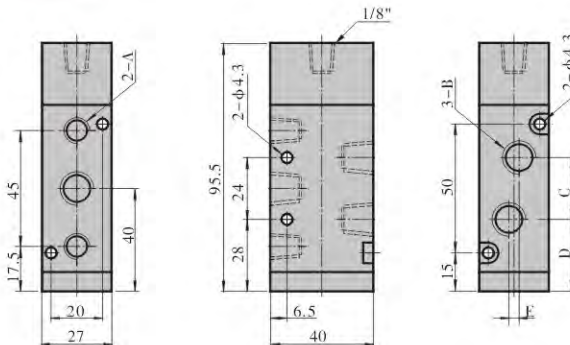
NO.	Item	NO.	Item
1	Bottom cover screw	10	Pilot body
2	Spool spring	11	Piston O-ring
3	Bottom cover	12	Pilot screw
4	Bottom cover gasket	13	Pilot screw
5	Body	14	Return seat
6	Spool O-ring	15	Return spring
7	Spool	16	Return seat
8	Wearing ring	17	E clip
9	Piston	18	Side cover

Material of major parts

Item	4A310	4A320	4A330	Item	4A310	4A320	4A330
Body		Aluminum alloy		Bottom cover	Zinc alloy		-
Spool		Aluminum alloy		Pilot body		Aluminum alloy	
Spool O-ring		HNBR		Fixed screw		Iron	
Bottom cover gasket	NBR			Return spring	Stainless steel		-
Piston		Plastic		Piston O-ring		NBR	

Dimensions

4A310

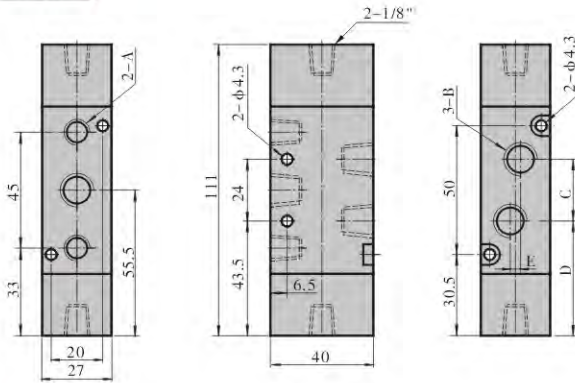


Item/Model	4A310-08	4A310-10
A	1/4"	1/4"
B	1/4"	3/8"
C	22	22
D	29	29
E	0	4

AIR VALVE(5/2 5/3WAY)

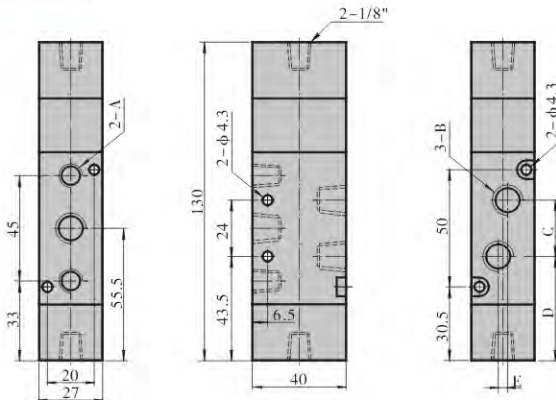
4A300 SERIES

4A320



Item\Model	4A320-08	4A320-10
A	1/4"	1/4"
B	1/4"	3/8"
C	22	24
D	44.5	43.5
E	0	4

4A330



Item\Model	4A330-08	4A330-10
A	1/4"	1/4"
B	1/4"	3/8"
C	22	24
D	44.5	43.5
E	0	4

