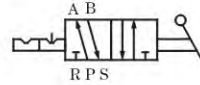


# HAND LEVER VALVE(5/2 WAY)

## 4H SERIES



### Symbol

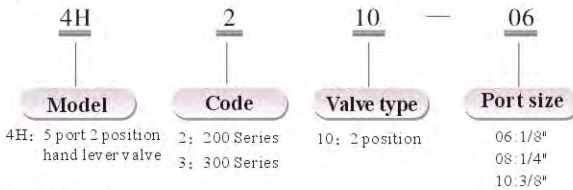


### Specification

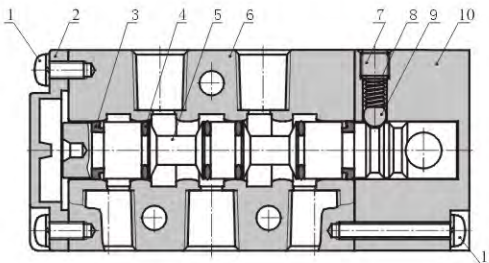
Item/Type	4H210-06	4H210-08	4H310-08	4H310-10
Fluid	Air (to be filtered by 40 $\mu$ filter element)			
Operating	Direct acting			
Orifice size mm <sup>2</sup>	14(Cv=0.78)	16(Cv=0.89)	25(Cv=1.39)	30(Cv=1.67)
Port size	In=Out=Exhaust=1/8"	In=Out=1/4" Exhaust=1/8"	In=Out=Exhaust=1/4"	In=Out=3/8" Exhaust=1/4"
Pressure range	0-8.0bar (0-0.8MPa)(0-114Psi)			
Temperature °C	-5-60			
Lubrication	Not required			
Operating angle	± 15°			

\*Note: PT, NPT, BSPP Thread are available.

### Ordering code



### Inner structure



NO.	Item
1	Screw
2	Bottom cover
3	Packing
4	O-ring
5	Spool
6	Body
7	Inner screw
8	Spring
9	Steel ball
10	Top cover
11	Screw



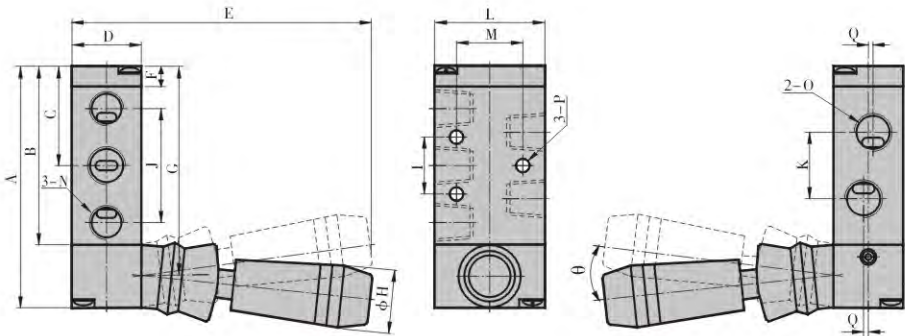
# HAND LEVER VALVE(5/2 WAY)

## 4H SERIES

### Material of major parts

Item/Model	4H210-06	4H210-08	4H310-08	4H310-10
Screw	Steel			
Bottom cover	Zinc alloy			
Spool	Steel			
Body	Aluminum alloy			
Inner screw	Steel			
Spring	Stainless steel			
Top cover	Aluminum alloy			
Handle seat	Copper			
Handle	Nylon			
Gasket	NBR			
Packing	HNBR			
O-ring	NBR			

### Dimensions



Type/Item	A	B	C	D	E	F	G	H	I
4H210-06	76.7	56.5	31.5	22	94	6.5	66.5	$\phi 19$	20
4H210-08	76.7	56.5	31.5	22	94	6.5	66.5	$\phi 19$	20
4H310-08	92.5	72.5	40	27	98.4	7.5	82.5	$\phi 19$	24
4H310-10	92.5	72.5	40	27	98.4	7.5	82.5	$\phi 19$	24

Type/Item	J	K	L	M	N	O	P	Q	$\theta$
4H210-06	36	18	35	23.5	1/8"	1/8"	$\phi 4.3$	-	16.4
4H210-08	36	21	35	23.5	1/8"	1/4"	$\phi 4.3$	1.5	16.4
4H310-08	45	22	40	27.5	1/4"	1/4"	$\phi 4.3$	-	20.7
4H310-10	45	24	40	27.5	1/4"	3/8"	$\phi 4.3$	2	20.7