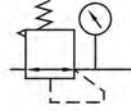


# MINI REGULATOR

## SR SERIES



### Symbol



### Specification

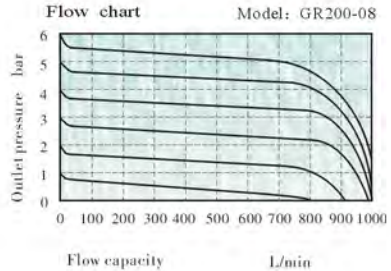
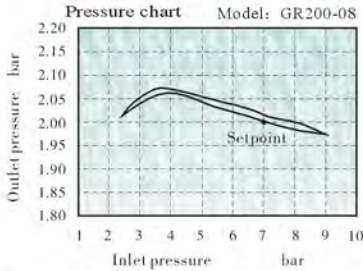
Model	SR200-06	SR200L-06	SR200-08	SR200L-08
Fluid	Air			
Port size	1/8"		1/4"	
Pressure range	0.5~9.0bar(0.05~0.9MPa)(7~128Psi)			
Max service pressure	10.0bar(1.0MPa)(142Psi)			
Proof pressure	15.0bar(1.5MPa)(213Psi)			
Temperature	5~60°C			

\*Note: PT, NPT, BSPP Thread are available.

### Ordering code



### Pressure Flow Chart



### Dimensions

