



Ideal For Mobile Equipment Applications

2-position ACV valves can be used for four-way directional control or as a three-way pilot valve. Its function indicator has been designed directly into the control knob and is visible only when the valve is in the energized or open position. In the unoperated (closed) position the indicator ring is concealed within the knob assembly.

ACV features an optional interlock reset port which can be used to automatically return the valve to the closed position. Designed for mobile equipment operations to avoid stall conditions, the interlock feature is used to ensure that the PTO cannot be operated while the vehicle is in motion.

Air Or Electric Reset

The reset port can be connected to the handbrake line to force valve "shut-off" whenever the handbrake is released. This would prevent the simultaneous consumption of energy from auxiliary equipment and the moving vehicle, a situation likely to result in a stall condition or equipment damage. On electrical interlock models, removing the electrical supply will force shutoff.

ACVs are rear ported to simplify dashboard or panel mounting. All mountings are supplied with integral push-in fittings (for $\frac{5}{32}$ " or $\frac{1}{4}$ " tube). Simply push the tube directly into the valve.

How To Order

ACV - R25 - AR - B

Family Category
ACV = Air Control Valve

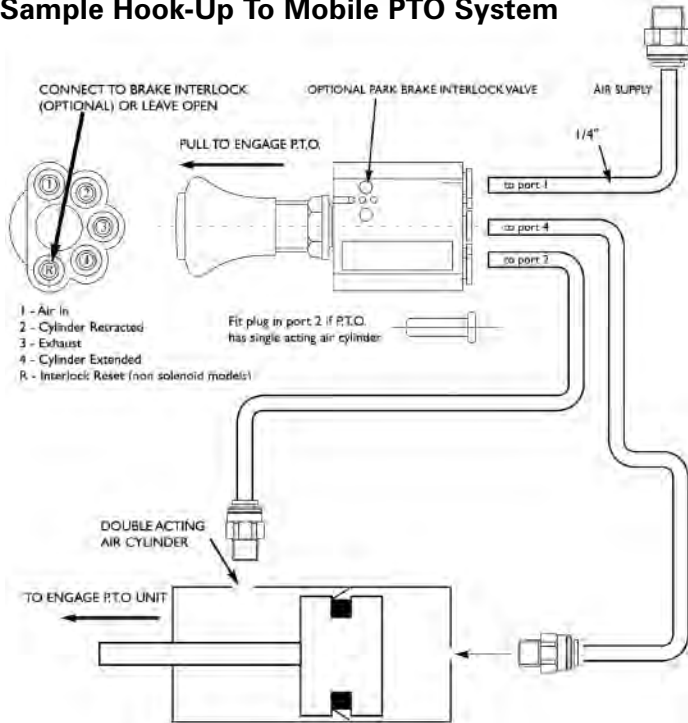
Knob Color
R = Red
B = Black
G = Green

Port Size
25 = $\frac{1}{4}$ "
6M = 6 mm

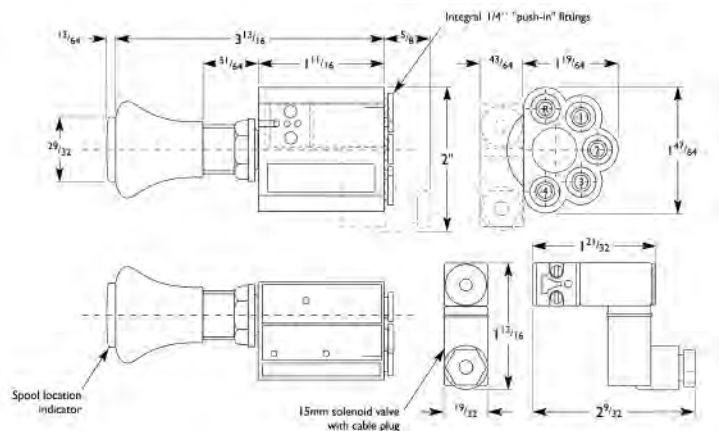
Solenoid
A = 12VDC
B = 24VDC

Feature
AR = Air Released
AP = Air Applied
SR = Solenoid with Air Released

Sample Hook-Up To Mobile PTO System



Dimensions $\frac{1}{4}$ " Models



General Specifications

Media:	Air to 145 PSI (10 Bar)
Min. Pressure to Reset Port :	35 PSI
Flow ($\frac{5}{32}$" models):	0.053 C _v
Flow ($\frac{1}{4}$" models):	0.12 C _v
Neck Diameter For Panel Mounting :	$\frac{11}{16}$ "
Body:	Plastic
Spool:	Brass
Fittings:	Brass and Plastic
Seals:	PTFE filled Nitrile
Temperature:	-4° to 122°F
Cycle Life:	> 15 Million