

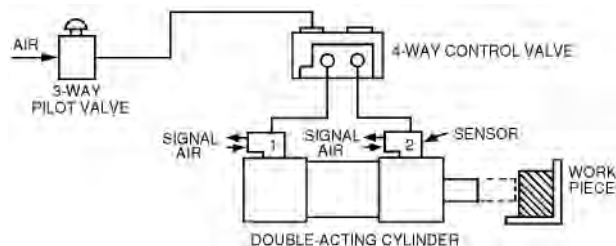


SCS-112

## Pneumatic Stroke Completion Sensors

Stroke Completion Sensors (SCS) mount directly on cylinder ports to provide an air signal when rod motion stops...even when the full stroke length is not used. Stroke completion sensors automatically adjust to variable strokes, replacing limit and reed switches in clamping, holding and sequencing tasks.

Sensors work by comparing supply pressure to exhaust pressure. Once the pressure drops on the exhaust side of the cylinder, the sensor will emit an air signal. Stroke completion sensors are not recommended for cylinder "inching" operations with pressure held valves.



In this sample circuit, sensor #1 provides an air signal when the cylinder rod is retracted. When the four-way control valve shifts, air flows to the cylinder, which extends. This causes sensor #1 to shut off. The cylinder rod stops when it reaches the work piece or end of stroke, causing sensor #2 to emit an air signal. This air signal may be used to actuate another valve or for sequencing operations.

When using a flow control valve in conjunction with a stroke completion sensor, place the flow control valve between the control valve and the sensor.

## Specifications & Dimensions

Model Number	Mtg. Thread	Pilot Tubing	Pressure Range	Length	Width	Height
SCS-112	1/8" NPT	5/32" OD	60 to 120 PSI	2 3/16"	29/32"	1"
SCS-250	1/4" NPT	5/32" OD	60 to 120 PSI	2 3/16"	29/32"	1"
SCS-375	3/8" NPT	5/32" OD	60 to 120 PSI	2 3/4"	1 17/64"	1 1/16"
SCS-500	1/2" NPT	5/32" OD	60 to 120 PSI	2 3/4"	1 17/64"	1 1/16"

Temperature Range 5° to 140° F



MPE-B

MPE-BZ

MPE-BZE

## Air to Electric Switches

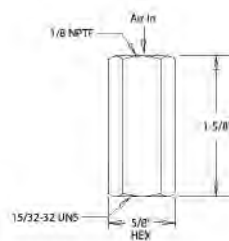
Air to electric switches convert air signals into electrical signals...ideal for actuating solenoid power valves or other electric components. Switches may be wired normally closed or normally open.

Actuator head model MPE-B may be easily mounted on any plunger-type switch; operating range is 8 PSI (minimum) to 100 PSI (maximum) and is not adjustable to a specific pressure.

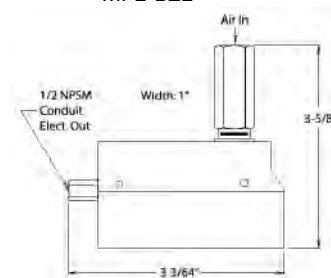
Switch models MPE-BZ and MPE-BZE are single pole double throw (SPDT), have a 15 amp capacity for normal, low resistance electrical circuits and are UL and CSA listed. Solder terminals accept up to #14 wire.

## Dimensions

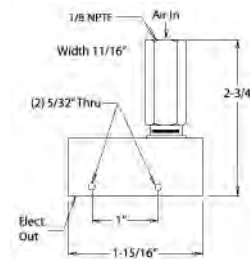
MPE-B (Actuator Head)



MPE-BZE



MPE-BZ



## Specifications

Model Number	Description
MPE-B	Actuator Head Only
MPE-BZ	Actuator Head and Switch, 15 Amp
MPE-BZE	Actuator Head, Switch and Enclosure, 15 Amp