

Slide/Lockout Valve

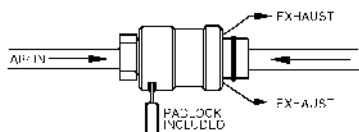
Mead's Slide/Lockout Valves (SLV) are designed to comply with OSHA Standard Rule 29 CFR1910.147. SLVs exhaust downstream air to atmosphere when the valve is in the closed position. This prohibits the unexpected cycling of equipment due to stored energy in the air line. These valves can only be locked in the closed position, rendering any downstream machinery or equipment completely inoperable. The aluminum sleeve is anodized bright gold for easy identification.

Put A Lock On Plant Accidents

In the open position, air flows freely through the valve to downstream equipment or tool.



In the closed position, air from compressor side is restricted while exhaust air bleeds to atmosphere, rendering downstream equipment inoperable. Lockout is only possible in the closed position.



"Gang Lock" Option

SLVs may be ordered with a gang lock adapter rather than the standard Mead padlock. The adapter permits the use of one or multiple standard padlocks. To order, add a "G" to the model (i.e. SLVG-50).

OSHA Rule 29 CFR1910.147* (Effective January 1990)

To protect employees from the unexpected energization or release of stored energy during repair, maintenance and associated activities, this new standard requires potentially hazardous energy sources for certain equipment to be disabled and either be locked or labeled with a warning tag to prevent unauthorized start-up of these machines or equipment.

*Copies of the actual OSHA standard may be obtained from the U.S. Department of Labor, Occupational Safety and Health Administration, Office of Publications, Room N3101, Washington, D.C. 20210.



SLV-37

Specifications

Temperature Range: -50°F to 180°F

Pressure Range: 0 to 150 PSI

Construction:

Body: Black Anodized Aluminum

Sleeve: Gold Anodized Aluminum

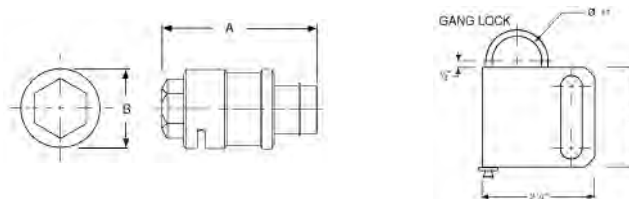
Retaining Ring: Steel

O Rings: Buna N

Lock: Solid Brass (Steel Shackle)

Warning: SLV's are not to be used for lockout of hydraulic fluid.

Dimensions



Ordering Information

Model	Model (With Gang Lock)	Port Size	Cv	A (In.)	B (In.)
SLV-25	SLVG-25	1/4" NPT	0.94	2 9/16"	1 1/4"
SLV-37	SLVG-37	3/8" NPT	2.00	2 15/16"	1 7/16"
SLV-50	SLVG-50	1/2" NPT	3.18	3 11/32"	1 5/8"

Note: Use part #LCK100 to order replacement lock and key set.
Use part #2028002 to order replacement gang lock.

Easy Glide Ball Handle Valves (MHL SERIES)



MHL-3/MHL-4

General Specifications

Flow: 0.14 Cv

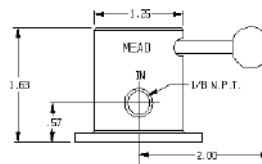
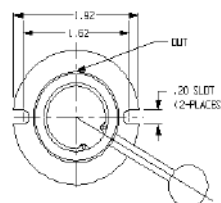
Ports: 1/8" NPT

Temperature Range: -40°F to 250°F

Lubrication: SAE 10

Pressure Range: 0 to 150 PSI (Air Only)

Seals: Buna



Low Friction Motion

MHL valves provide either 3-way pilot control (MHL-3) or 4-way directional control (MHL-4). To operate MHL valves, simply move the ball handle across the slot on the valve body. The handle rotates a precision-lapped disc to control the directional flow of air. The hardcoat anodized aluminum disc allows virtually effortless handle motion. The handle will hold in any position. Air exhausts through the disc and out to atmosphere.

Easy To Mount and Repair

Base mount holes make mounting and removal quick and easy. Further, MHL valves are easy to disassemble. By simply removing the ball handle and snap ring, any part worn by use can be found and replaced.