

# Versa Valves Application Spotlights ESD Controls

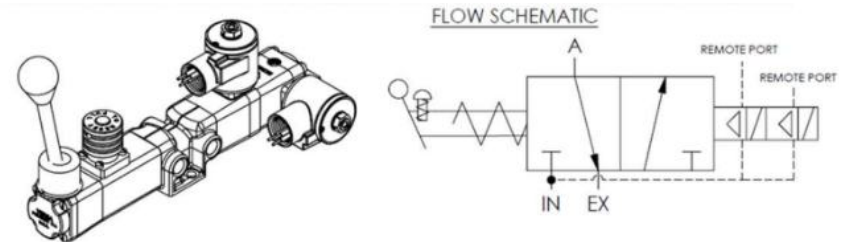
## Problem:

Unmanned Natural Gas compressor stations in West Virginia had 35 ESDs with necessary latching manual reset options (-181D). When normal wear and tear knocked out a solenoid, the facility would lose major income to downtime.

## Versa Valves Solution:

Installing a 2oo2 Redundant solenoid option (-RS) with diagnostic feedback options (-20) allowed for continuous operation and real-time maintenance notifications. Avoiding costly downtime without sacrificing reliability, performance, or necessary safety options.

**VAA-3321-B415-NGST-XV1-20-D024**  
**B415 = 181D, Latching manual reset +**  
**RS, redundant solenoid**



# Versa Valves Application Spotlights Standardized VMAPs

## Problem:

A knife gate valve manufacturer does a small volume of in-house valve automation. They don't have full resources of valve automation shop but greatly benefit from keeping valve automation costs in-house.

## Versa Valves Solution:

Versa presented our VMAP as a consolidated valve automation package. We coordinated a joint development of a standard single acting control circuit using an AR-316 regulators V-316 valves, bleed controls, and an auxiliary ports.

The solution provides a consolidated package with easy installation, ten year warranty, and trusted performance. The standard package is easily modified for customized applications.

**VA3-22-3S4A-XV9-000914**



# Versa Valves Application Spotlights Oil Sands Silo Lids

## Problem:

Automated tanker lids are typically “cleaned” with a sledgehammer, so the application does not support expensive solutions. For oil sands silos they need to be automated to work in harsh and very cold conditions which often require expensive solutions.

## Versa Valves Solution:

The C-series offers all the rugged durability that comes with the Versa name at a lower cost than brass or stainless options. By adding transitional reliability packages, we were able to tailor this valve stack to the demanding environments at the right price for the customer.

**CSG-4322-C8P-C14-HC-S-44-D024**

**CXX-4322-C8P-C14-HC-S-44-D024**





# Versa Valves Application Spotlights Natural Gas Controls

## Problem:

A manufacturer of natural gas control solutions had multiple failures in the field. On the verge of a major winter storm they needed a stainless steel, high pressure 5/3 control solenoid capable of withstanding the conditions, and they needed it fast.

## Versa Valves Solution:

Versa was able to supply 6 pcs of our V-316 rated for 300 PSI, built and ready for pick up in a matter of hours. The valve handled the storm and now ships ~25 pcs a month as the new standard on the customers equipment.

**VXX-4523-316-H2E-NGST-PPR-XXL4-D024**



# Versa Valves Application Spotlights Rail Car Mover Controls

## Problem:

A railcar mover manufacturer had multiple pneumatic control manifolds that often leaked, took up a lot of space in their cabinet, and generally cost more in assembly than in materials.

## Versa Valves Solution:

Versa was able to condense the horn, airbrakes, traction sand, and couple controls onto a single manifold. The complex circuit utilized a C-series manifold with isolation plates, bleed controls, sandwich regulators, and intermediate supplies. Operators reported a major savings in assembly through condensation, AND downtime over incumbent due to elimination of leaking competition.

## CUST-C7B-A561-B03769

Piece no	Component number	Title	Qty per	List price
10	<a href="#">C7M-4302-6-SP1-SP2-SP3-XX4</a>	MANIFOLD ASM, (6-STATION)	1.00000000	\$259.40
20	<a href="#">CSG-4332-HC-D012</a>	Valve, 4-Way, Alum, 12VDC	4.00000000	\$110.10
30	<a href="#">C7AR-4125M</a>	Sandwich Regulator	1.00000000	\$178.50
40	<a href="#">CXX-4333-HC-D012</a>	Valve, 4-Way, Alum, 12VDC	2.00000000	\$172.50
50	<a href="#">DE-4</a>	Dust Excluder (3/8" NPT), Alum	2.00000000	\$16.70
60	<a href="#">P-1022-03A</a>	PLUG, PIPE(1/4"NPT FLUSH SEAL)	7.00000000	\$4.90
70	<a href="#">P-1022-04A</a>	PLUG, PIPE(3/8"NPT FLUSH SEAL)	3.00000000	\$9.60

